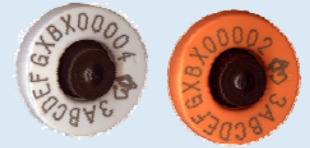


ALL ACCOUNTS

Lifetime traceable status – reasons for loss

October 2009




All devices recorded on the database have a Lifetime Traceability status – either Y (Yes) or N (No). When devices are first uploaded to the NLIS Database, white **Breeder** devices are assigned an LT status of **Y**, and orange **Post Breeder** devices, an LT status of **N**. A device can lose its LT status for several reasons – the most common cause is unrecorded movements in the transaction history.

The LT status and associated **LT reason for loss codes** are displayed on the following reports:


1. View devices on my property – All devices currently on my PIC (no date range)
2. Active devices on PIC

You can also see a description of the codes if you click the icon next to the Report name field.

View/generate all reports

Which report would you like to view or generate?
Report name: View devices on my property 
Output type: On-screen

PIC: PICTEST5
Report Type: All devices currently on my PIC (no date range)
From Date: 10 Oct 2009
To Date: 10 Oct 2009

Which report would you like to view or generate?
Report name: Active devices on PIC 
Output type: On-screen

Property Identification Code: PICTEST5

Displaying items 1 - 20 of 82.

rfid	nlisid	PIC	transferDate	issueDate	lt	ReasonTypeID	TagEUStatus	VisualID	Status	Active
900 99999993750	PICTEST1GEB0054	PICTEST5	2007-09-20	2007-01-02	N	1	N			YES
900 99999993756	PICTEST1GEB0060	PICTEST5	2009-03-24	2007-01-02	N	1	N			YES

pic	NLIS ID	RFID	transfer date	Issue date	LT	LT reason for loss	EU status	Management ID	Status	Active	
1	PICTEST5	NI140229QCY00633	951 000000041058	24/11/2008	28/08/2003	N	2	N	UNKNOWN	[NLS,N] [IMPO,IM2]	YES
2	PICTEST5	3WLF018XBU2065	982 000002397315	14/05/2009	08/06/1999	Y	-	N	UNKNOWN	[NLS,N] [IMPO,IM1]	YES
3	PICTEST5	3WLF018XBU2063	982 000002580490	14/05/2009	08/06/1999	Y	-	N	UNKNOWN	[NLS,N] [IMPO,IM1]	YES

- 1 Lifetime traceability has been lost due to the device being a Post Breeder AND which is NOT registered as replacing a device with lifetime traceability.
- 2 Lifetime traceability has been lost due to the device being transferred from an incorrect PIC.
- 5 Lifetime traceability has been lost due to the device being transferred to the default PIC (AAAAAAAAA).
- 7 Lifetime traceability has been lost due to the **device status** being set to damaged device (**D1**).
- 8 Lifetime traceability has been lost due to the **device status** being set to lost device (**L1**).
- 9 Lifetime traceability has been lost due to the **device status** being set to stolen device (**S1**).
- 10 Lifetime traceability has been lost due to the **device status** being set to replace device (**R1**).
- 11 Lifetime traceability has been lost due to a manual override by the administrator.
- 12 Lifetime traceability has been lost due to the device being exported live to another country.
- 13 Lifetime traceability has been lost due to the **device status** having a status of Imported from a BSE country (**IM1**).
- 14 Lifetime traceability has been lost due to the **device** having status of Imported from a Non-BSE country (**IM2**).
- 15 Lifetime traceability has been lost due to the **device status** being set to Device lost after attachment (**L2**).
- 16 Lifetime traceability has been lost due to the **device status** being set to lost cattle (**L1**).